



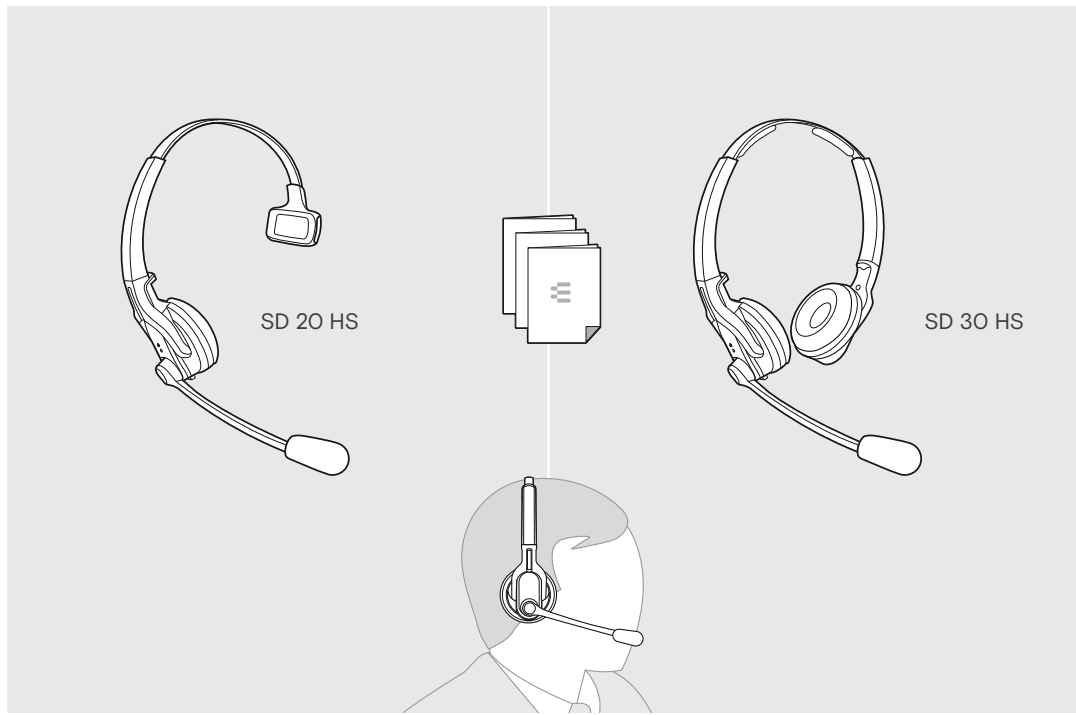
IMPACT SD Series

IMPACT SD Pro 1 ML headset
IMPACT SD Pro 2 ML headset

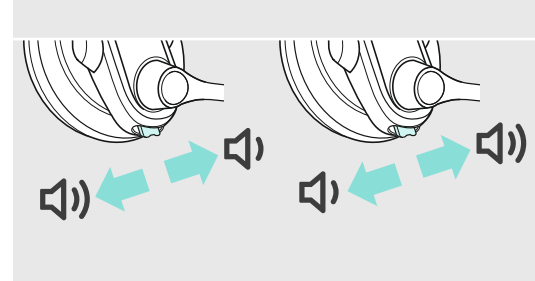
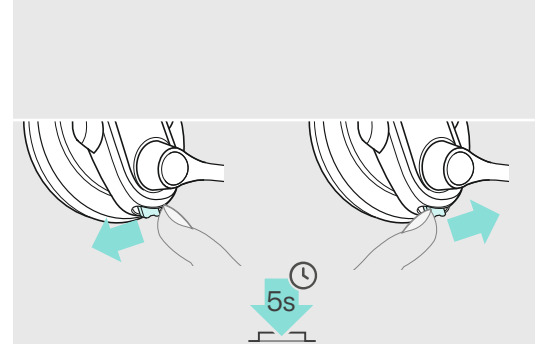
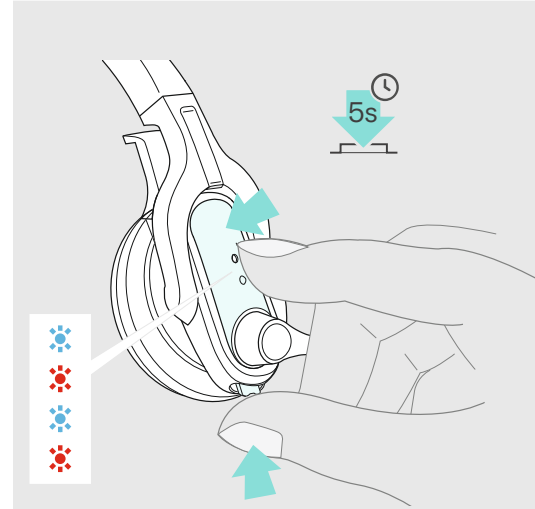
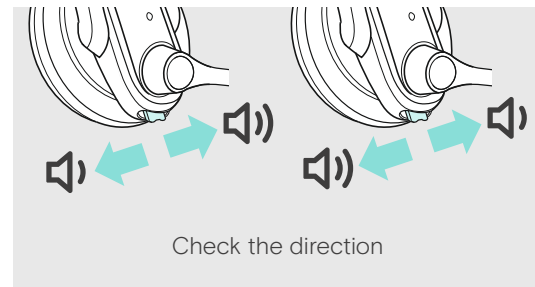
EN Quick Guide ES Guía rápida
FR Guide express PT Guia Rápido

Model: SD 20 HS, SD 30 HS

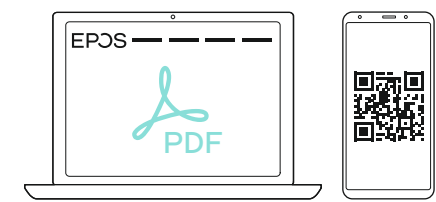
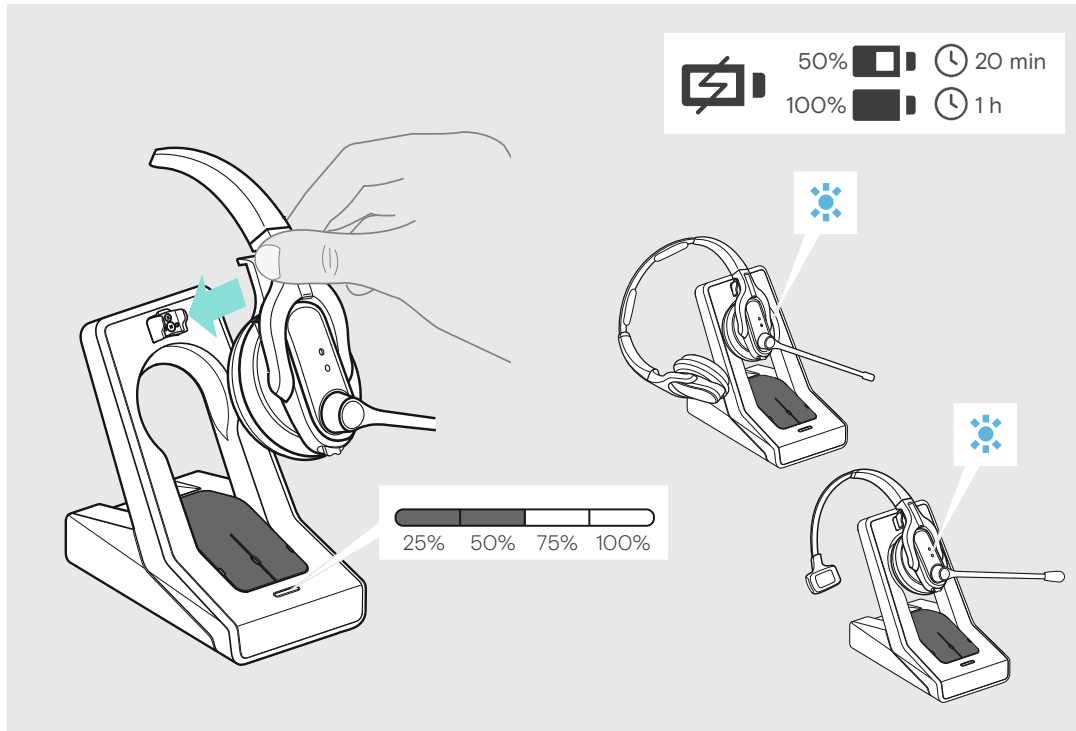
Package contents | Contenu de la boîte | Contenido del embalaje | Conteúdo da embalagem



Swapping the direction of the volume buttons |
Permutation de l'affectation des boutons de volume |
Intercambio de la asignación de los botones de
volumen | Mudar a atribuição dos botões de volume



Charging the headset | Charger le micro-casque | Carga del auricular | Carregar o headset



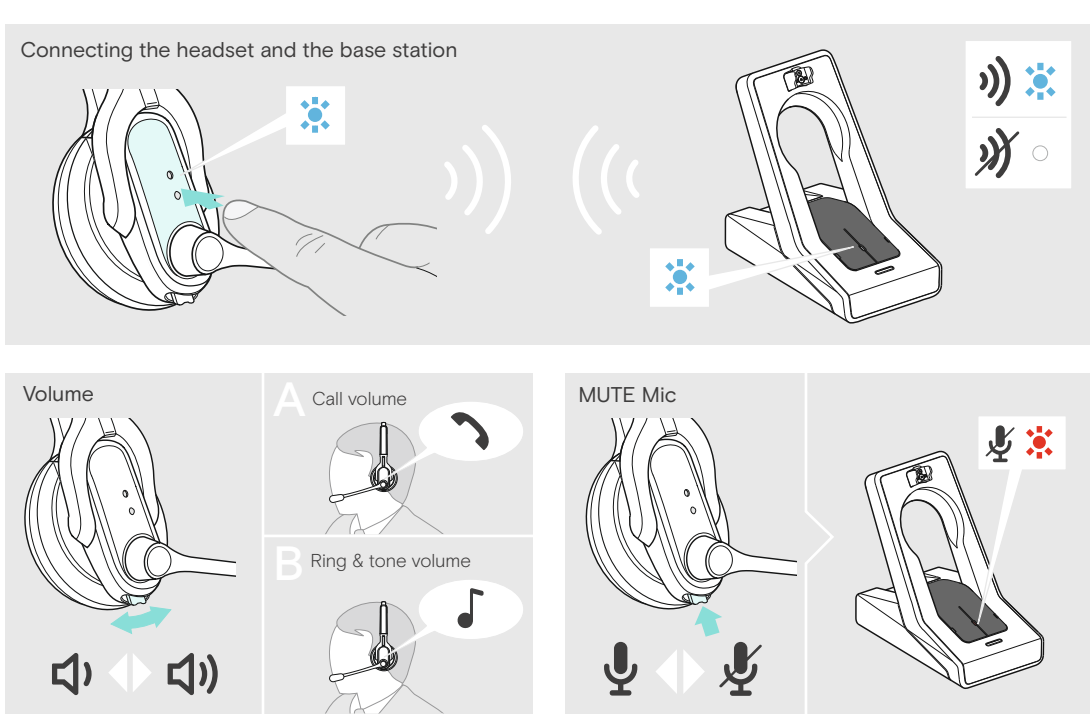
eposaudio.com/support

DSEA A/S

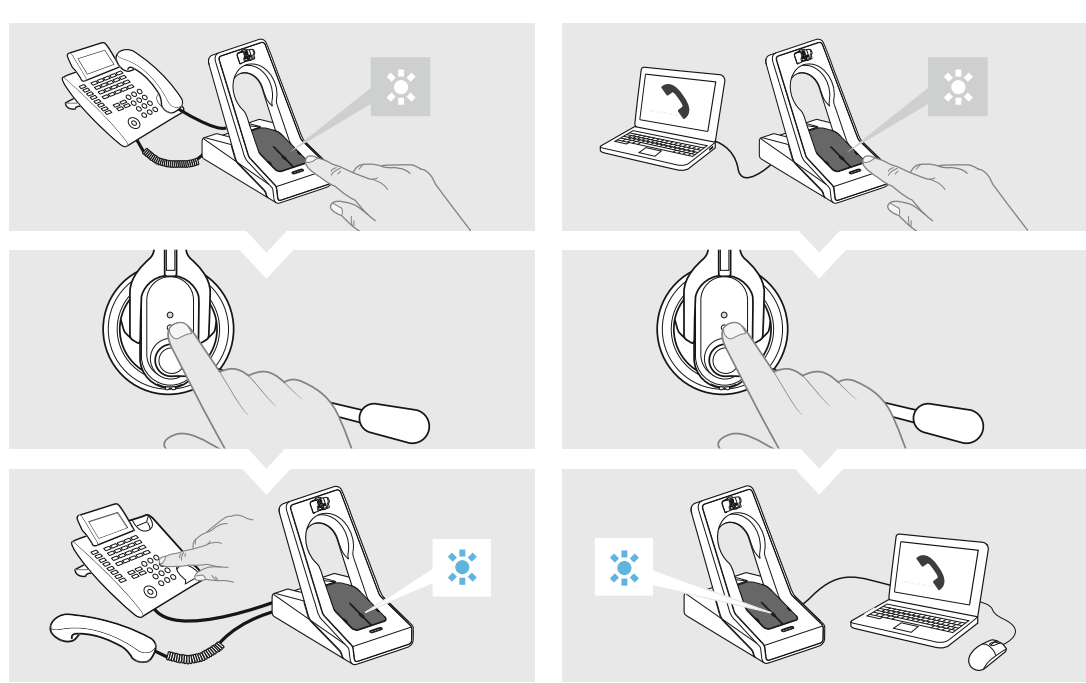
Kongebakken 9, DK-2765 Smørum, Denmark
eposaudio.com

Printed in China, Publ. 12/22, 770-00079/A10

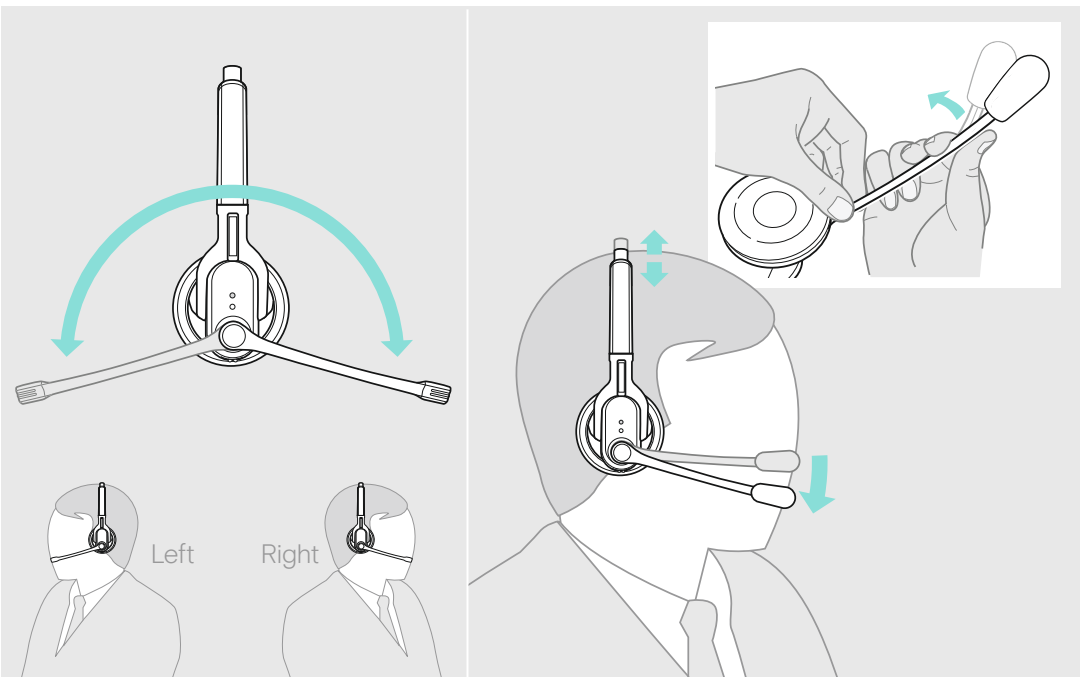
Using the headset | Utiliser le micro-casque | Usar el auricular | Usar os auscultadores



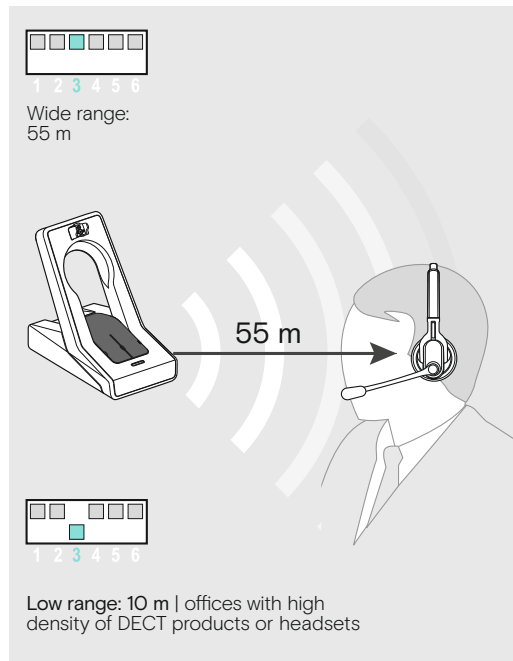
Making calls via the headset | Téléphoner avec le micro-casque |
Hacer llamadas con los auriculares | Fazer uma chamada telefonica através do fone de ouvido



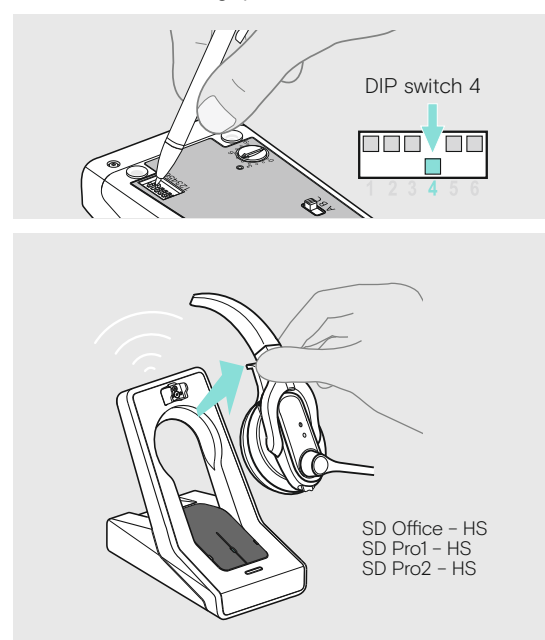
Adjusting and wearing the headset | Ajuster et porter le micro-casque |
Cómo ajustar y llevar el auricular | Ajustar e usar o auscultador |

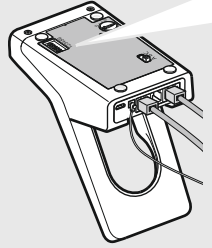
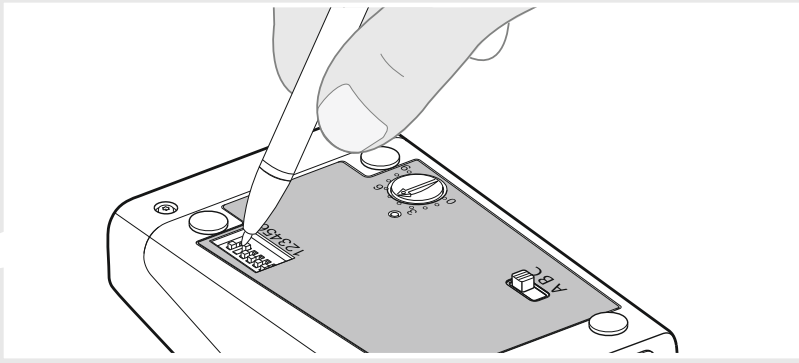
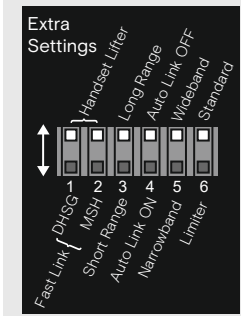


Leaving the DECT range | Quitter le rayon de portée
DECT | Salida del alcance DECT |
Abandonar o alcance DECT



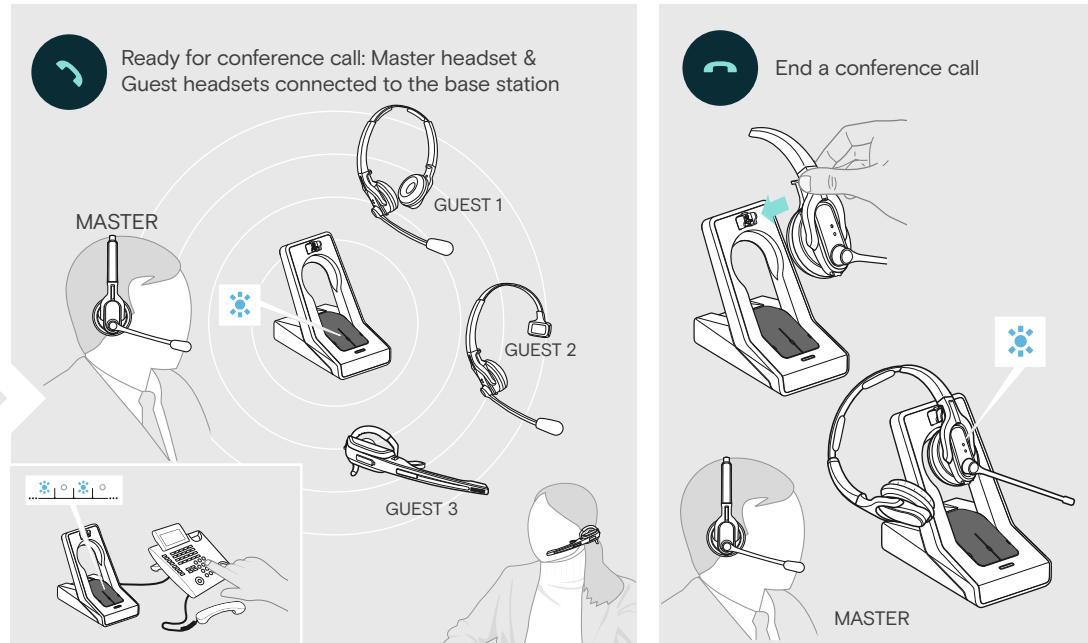
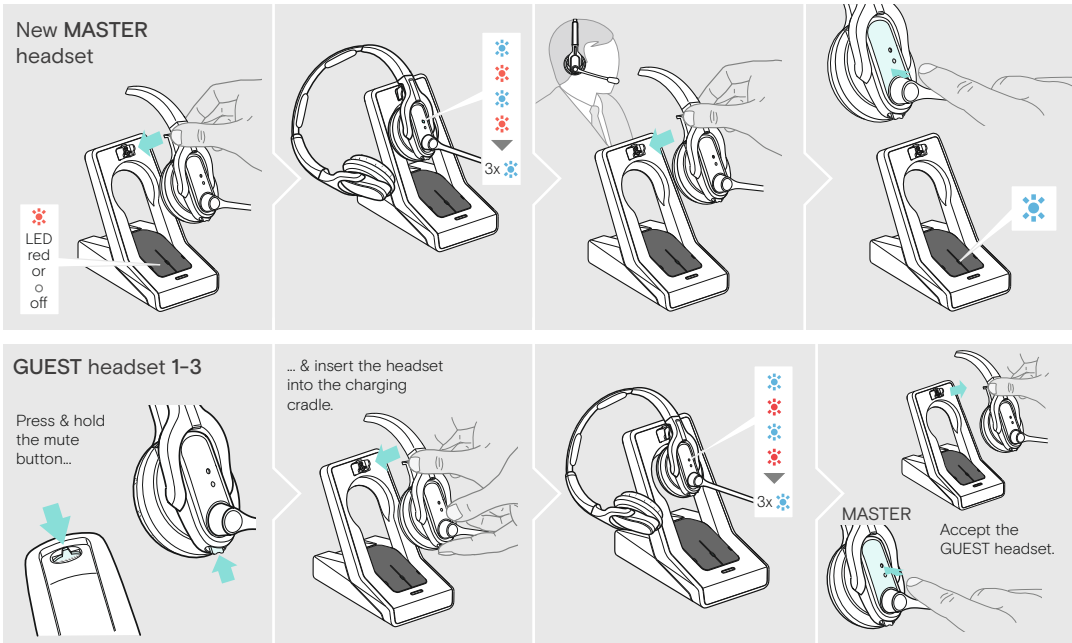
Automatic link establishment |
Établissement de liaison automatique |
Establecimiento de conexión automática |
Estabelecimento de ligação automática



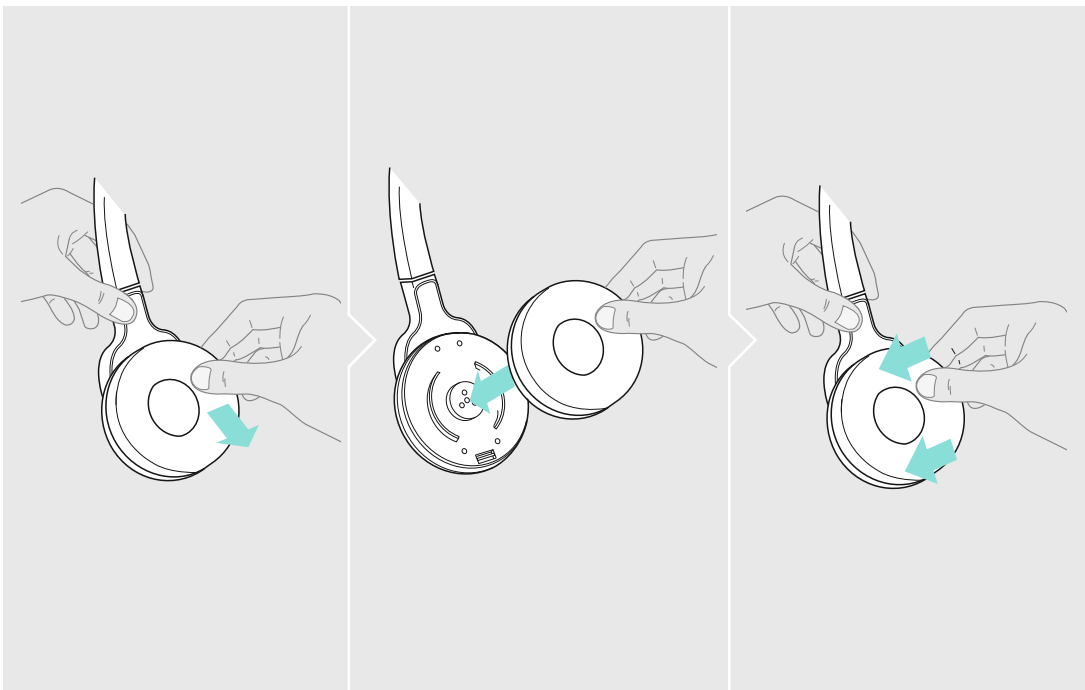


	Manual operation Lifts/hangs up the handset manually or using the handset lifter (HSL 10 II).		Manual link establishment When taking the headset out of the base station, you have to manually establish the wireless link between headset & base station.
	Electronic hook switch (DHSG standard) Call control via the headset system. For faster link establishment, see Fast Link.		Automatic link establishment - Auto Link When taking the headset out of the base station, a wireless link is automatically established between headset and base station.
	Electronic hook switch (MSH standard) Call control via the headset system.		Wideband audio transmission Automatic frequency adjustment of wideband & narrowband calls. Wideband audio transmission is e.g. supported by Skype & gives high speech quality. Battery life: 8 hours
	Fast Link for DHSG standard & HSL 10 II handset lifter Recommended for frequent callers. Fast link establishment without delay due to hidden link to the base station.		Narrowband audio transmission Battery life: 12 hours
	Standard radio range		Standard limitation
	Reduced radio range Use this setting in order to avoid interference with other DECT systems. Range of approx. 10 m indoors		Limited volume (country specific) EU and US version: in compliance with Directive 2003/10/EC AU version: in compliance with Directive AS/ACIF G616:2006

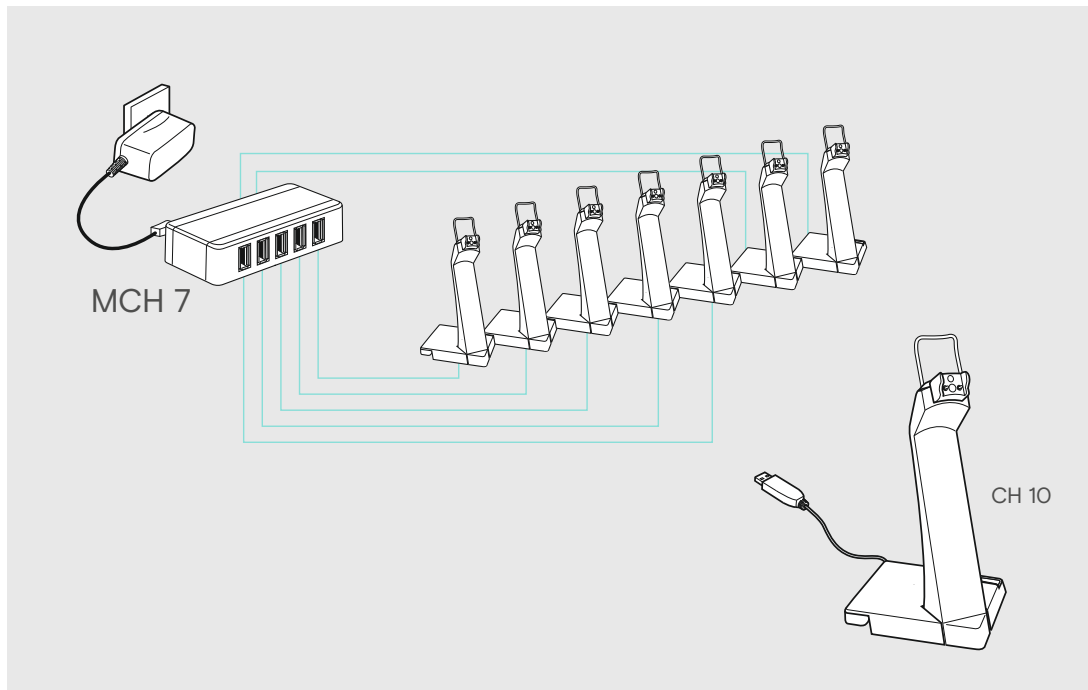
Holding a conference call: Connecting the master headset & the guest headsets with a base station |
 Tenir une conférence téléphonique : Connecter le micro-casque maître et l'oreillette invitée à la station de base |
 Realizar una conferencia telefónica: Conexión del headset maestro y de los headsets invitados con la estación base |
 Realizar uma chamada em conferência: Ligar o micro-auscultador mestre e os micro-auscultadores secundários à base



Replacing the ear pad | Remplacer l'oreillette | Sustitución de la almohadilla |
 Substituir a almofada do auscultador



Charging several headsets simultaneously | Charger plusieurs micro-casques |
 Carga de varios auriculares | Carregar vários headsets



Detailed information | Informations détaillées |
 Información detallada | Informação detalhada

For easy setup, configuration and softphone call control settings download EPOS Connect on eposaudio.com/connect

For Compatibility guide go to eposaudio.com/compatibility

For Instruction manual go to eposaudio.com/support